



Joanies To Go

REAL ESTATE & BUSINESS
\$495,000



**CALL TODAY FOR VIEWING.
OPEN & ACTIVE BUSINESS.
DO NOT DISTURB.**

DO NOT DISTURB BUSINESS

804 Russell, St. Louis, MO 63104

Building and Lot For Sale! Sale Would Also Include a Turn-Key Restaurant Opportunity. This Is A Successful Carry Out, Delivery and Catering Restaurant. Never Shut Down During COVID! Call today to make an appointment!



Joanies TO GO

802-806 Russell Blvd,
Saint Louis, MO 63104

BUSINESS & REAL ESTATE PRICE

\$495,000

BUILDING INFORMATION

- Building Sq. Ft: 1,725
- Lot Size- 0.24
- Tax ID: 0778-00-0107-0
- 2020 Taxes: \$5,238
- Year Built: 1956
- 1 story building with possible large patio.
- All FF&E included in sale price



Joanies TO GO

802-806 Russell Blvd,
Saint Louis, MO 63104

BACKGROUND

This is a 1,725 sq ft building located in the “Historic Soulard” with so much potential! Sale includes a very well-known business as well as real estate and all furniture, fixtures and equipment.

Outside fenced lot could have large patio added to add seating.

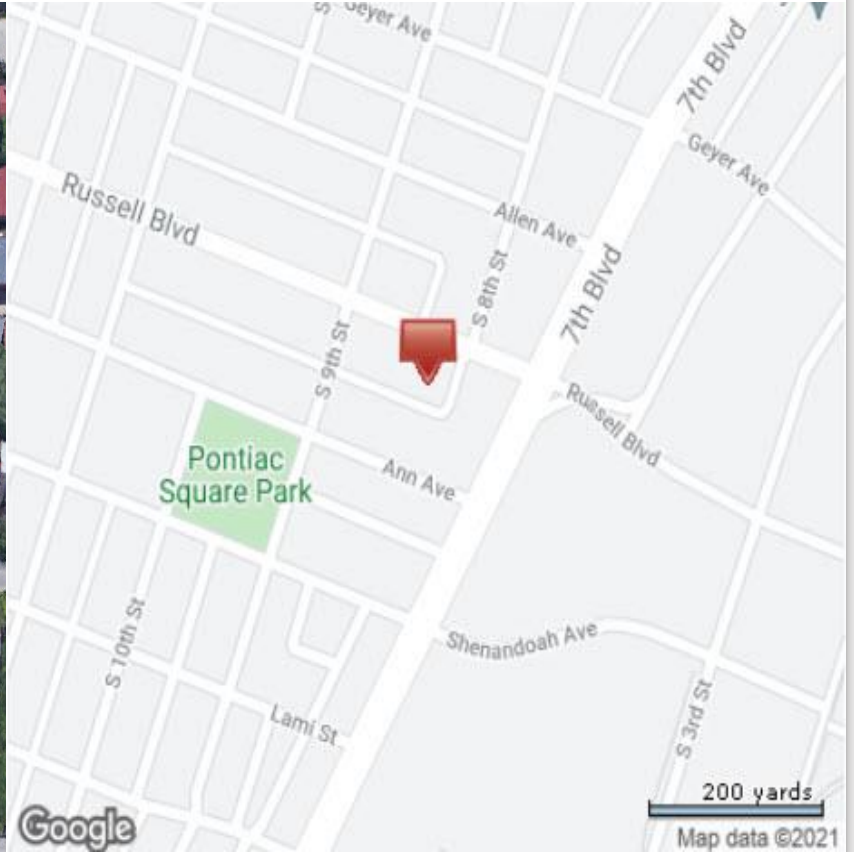
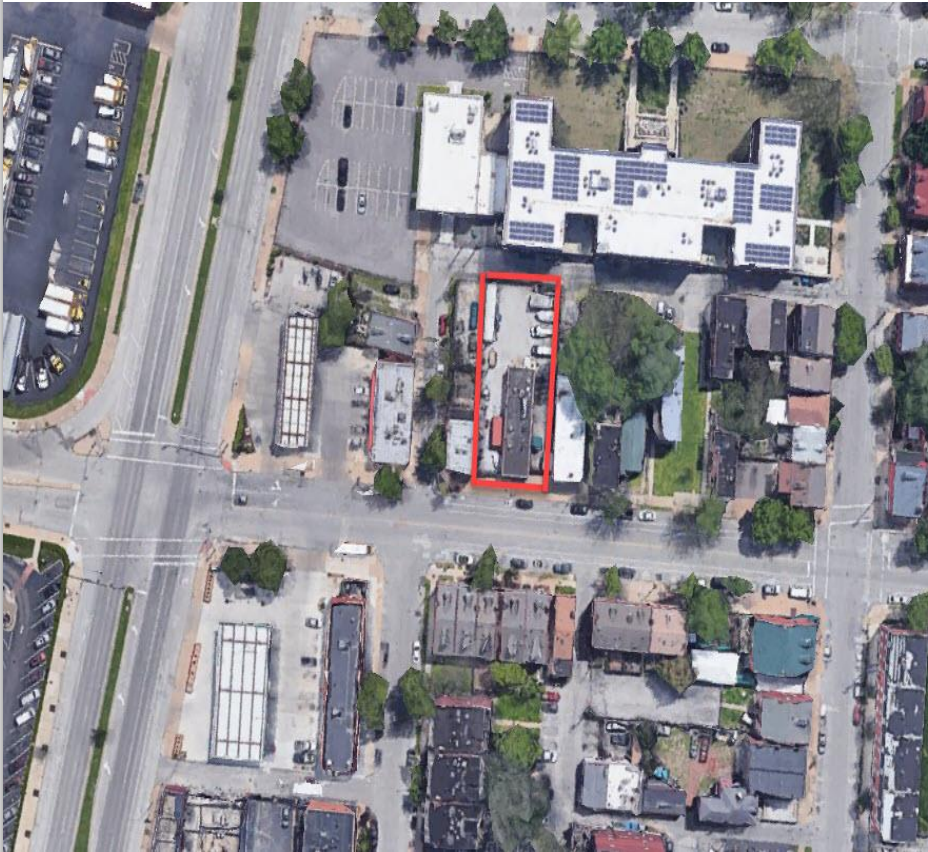
Owner is retiring so come look at this rare opportunity to own a building with lots of equipment.

Located near AB-InBev with over 3,000+ employees and around 300,000 Annual visitors with many attractions such as brewery tours, holiday events, and history.

Soulard is known for the 2nd largest Mardi-Gras party in the United States and is known for its entertainment, music, great bars, fantastic food with a wide variety of choices serving pizza, seafood, BBQ, and burgers! The weekend Soulard Farmers Market draws people from all over the region and is well known since 1779. The market offers fresh produce, home made food and bakery items

MUST SEE APPOINTMENT ONLY!

Call today to learn more!







Joanies TO GO

802-806 Russell Blvd,
Saint Louis, MO 63104

CALL TODAY FOR PRIVATE SHOWING.
OPEN & ACTIVE BUSINESS. DO NOT DISTURB STAFF.

KRAMER COMMERCIAL REALTY, LLC | Ron & Mark Kramer: 314-502-9155 | 100 Chesterfield Business Parkway
www.KramerCommercialRealty.com | Ron@Kramercr.com; Mark@Kramercr.com | Suite 200, Saint Louis, MO 63005

All information contained herein is from sources deemed reliable; however, no representation or warranty is made to the accuracy thereof.