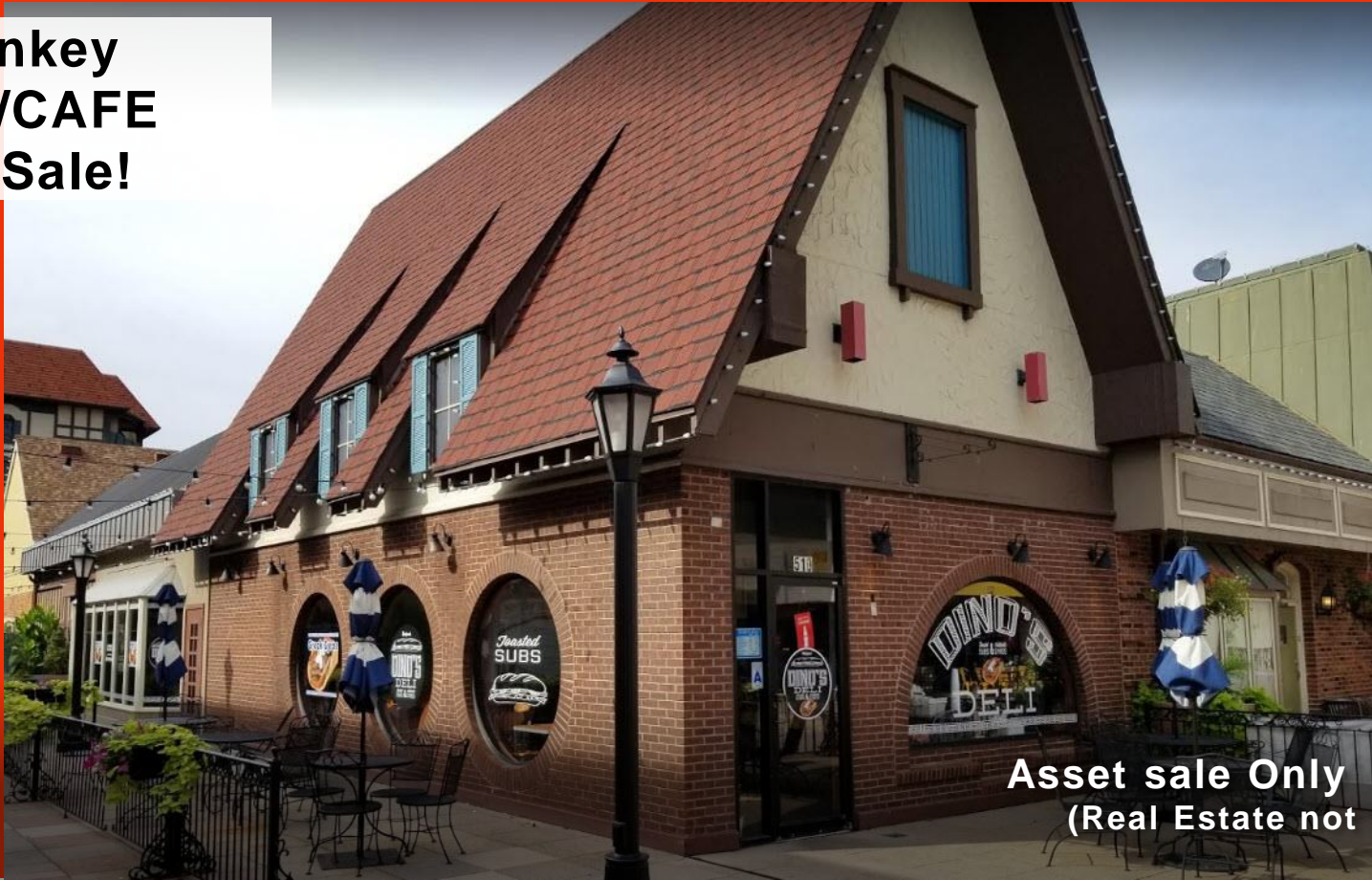


# Turnkey DELI/CAFE For Sale!



**Asset sale Only \$97,500**  
(Real Estate not included)



## DO NOT DISTURB BUSINESS

*510 W PORT PLAZA DR,  
ST. LOUIS, MO 63146*

All equipment, smallware's, fixtures, and more included in sale price. This is a turnkey opportunity in the popular West Port Plaza. You do not want to miss this opportunity when offices open back up for all employees!

CALL TODAY TO SET UP TOUR.



# DELI/CAFÉ FOR SALE

510 Westport Plaza  
St. Louis, MO 63146

## BUSINESS PRICE

**\$97,500**  
**Includes all FF&E**

## LEASE INFORMATION

Real Estate is Leased  
849 (+/-) Sq Ft  
\$974. plus % of sales



# DELI/CAFÉ FOR SALE

510 Westport Plaza  
St. Louis, MO 63146

## BUSINESS INFORMATION

- This is a fantastic opportunity for any hands-on owner/operator looking to grow sales with so much upside when 500,000 sq ft of office space opens back up!
- Located in the heart of Westport Plaza with thousands employees within minutes of this location.
- Huge opportunity to grow sales with catering, expanding restaurant hours, and promoting private events in small wine room.
- West Port Plaza is home to Worldwide Technology one of the areas largest employers.
- This restaurant has always had great sales and continues to grow the business each year.
- Beautiful Patio with occasional live music and courtyard festivals.
- Must sign confidentiality & be qualified before tour.



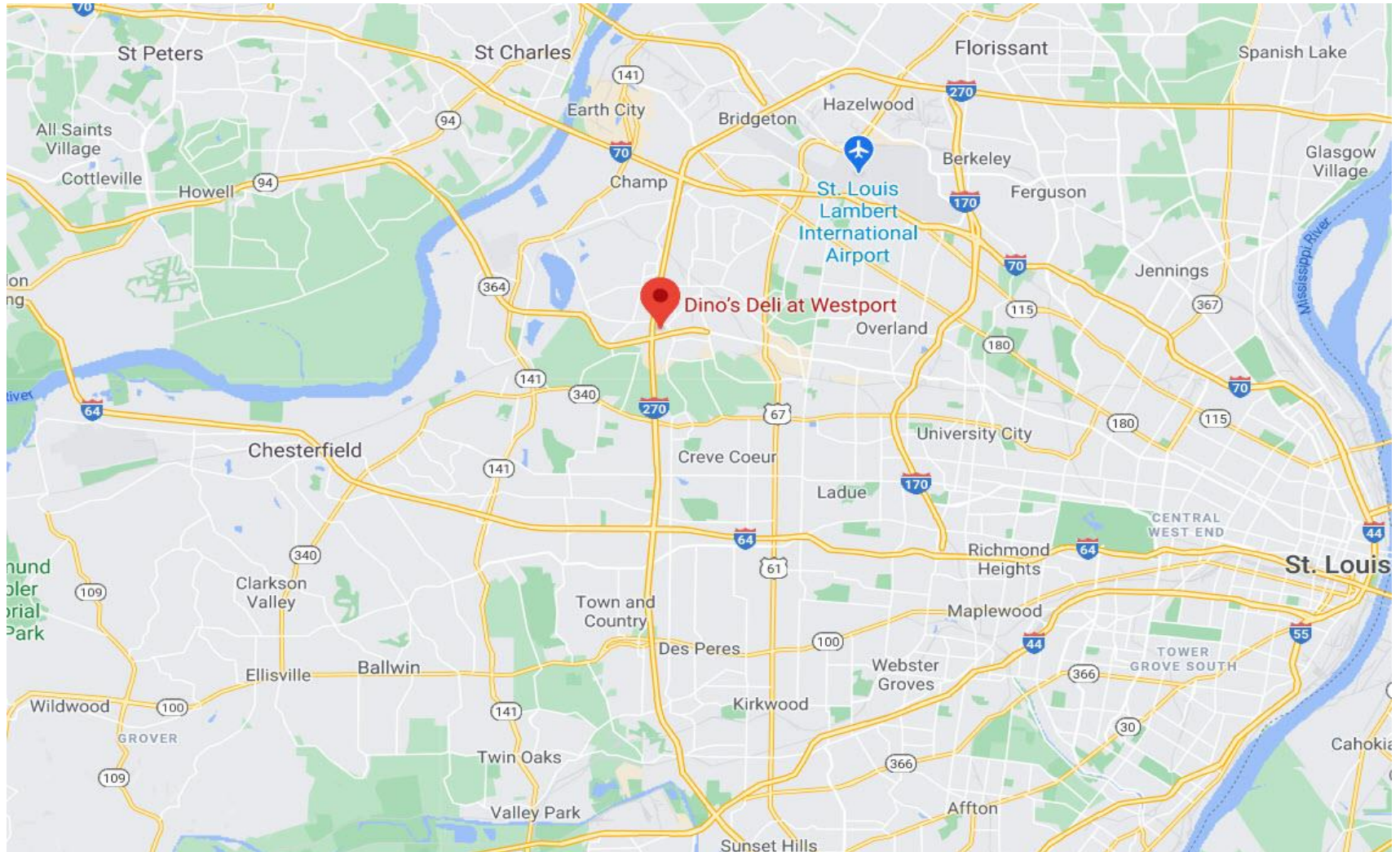
# DELI/CAFÉ FOR SALE

510 Westport Plaza  
St. Louis, MO 63146

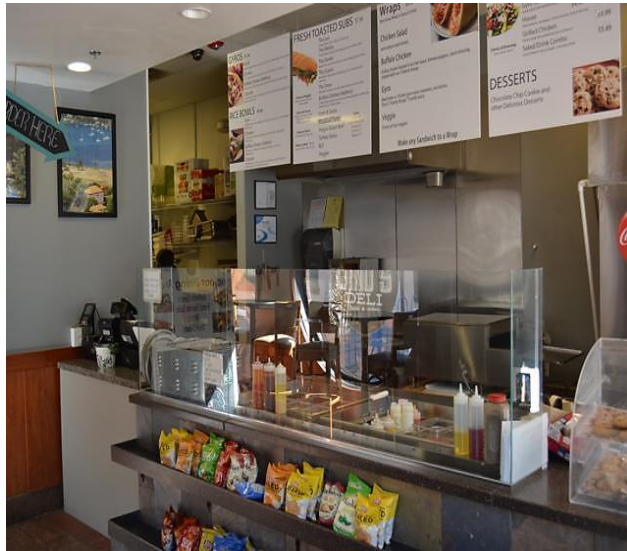
## ASSET INFORMATION

- 1 walk in cooler
- 1 walk in freezer
- 1 3 comp sink
- 1 hand washing sink
- 1 vegetable sink
- 1 mop sink
- 1 meat slicer
- 1 gyro slicer
- 1 prep table with cooler
- 1 sneeze guard
- 1 two door cooler
- 1 one door cooler
- 10 outdoor patio tables
- 40 outdoor patio chairs
- 7 indoor bar tables
- 22 bar chairs
- 5 indoor dining tables
- 20 indoor dining room chairs
- 1 wine refrigerator
- 1 bar
- 4 prep tables
- 3 warmers
- 1 conveyer oven
- 1 gyro machine
- 1 countertop deep fryer
- 2 rice makers
- 1 50 inch tv
- 1 electrical fireplace
- 4 cabinets/ countertop

# LOCATION



# Mangia Pictures





# DELI/CAFÉ FOR SALE

510 Westport Plaza  
St. Louis, MO 63146

CALL TODAY TO LEARN MORE.  
DO NOT DISTURB BUSINESS.

KRAMER COMMERCIAL REALTY, LLC | Ron & Mark Kramer: 314-502-9155 | 100 Chesterfield Business Parkway  
www.KramerCommercialRealty.com | Ron@Kramercr.com; Mark@Kramercr.com | Suite 200, Saint Louis, MO 63005

All information contained herein is from sources deemed reliable; however, no representation or warranty is made to the accuracy thereof.